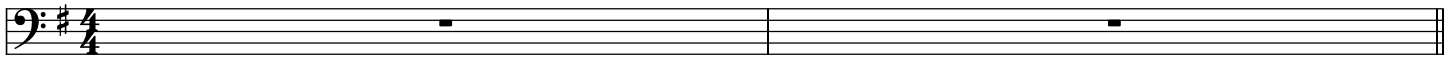


# Carbonara - Bass

Spliff

♩ = 136

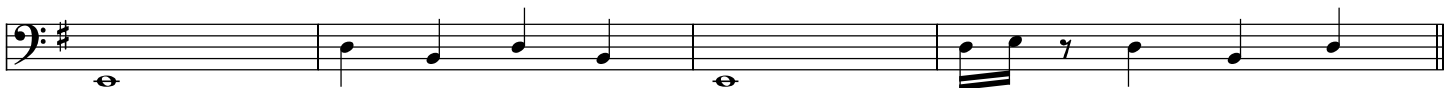
(♩♩ =  $\overset{\frown}{\overset{3}{\text{♩}}}$ )



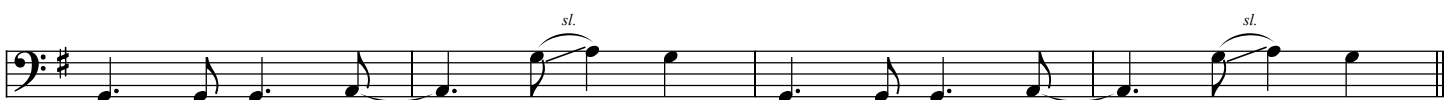
## Intro



## Vers A



## Vers B



## Vers A



## Chorus





Solo

A section labeled 'Solo' consisting of eight bass clef staves. The first two staves are empty. The third staff contains a long slur with four whole notes: G2, C3, G2, C3. The fourth staff contains a rhythmic pattern of eighth notes: G2, A2, B2, C3, D3, E3, F3, G3, A3, B3, C4, D4, E4, F4, G4. The fifth staff contains a sequence of quarter notes: G2, A2, B2, C3, D3, E3, F3, G3, A3, B3, C4, D4, E4, F4, G4. The sixth staff contains a sequence of quarter notes: G2, A2, B2, C3, D3, E3, F3, G3, A3, B3, C4, D4, E4, F4, G4. The seventh and eighth staves are empty.

Chorus

A single bass clef staff in G major (one sharp). The melody consists of quarter notes: G2, A2, B2, C3, D3, E3, F3, G3, A3, B3, C4, D4, E4, F4, G4. A slur covers the notes from G3 to E4, with 'sl.' written above the slur. The staff ends with a double bar line and a repeat sign. The text '8x' is written at the end of the staff.