

# Diamant

Standard tuning

♩ = 70

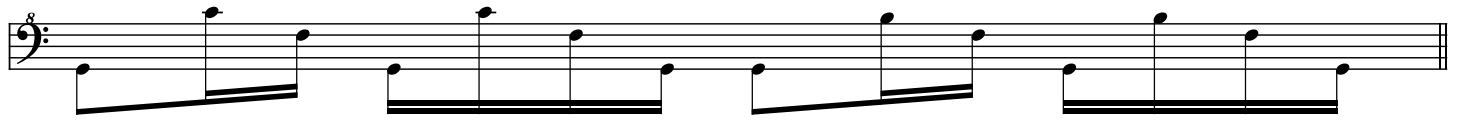
## Intro

*let ring throughout*

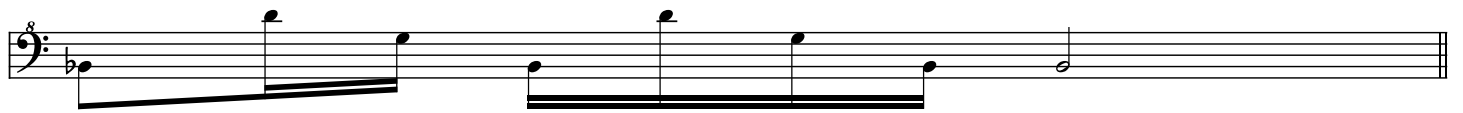
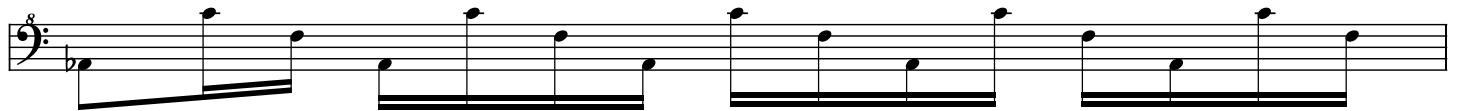
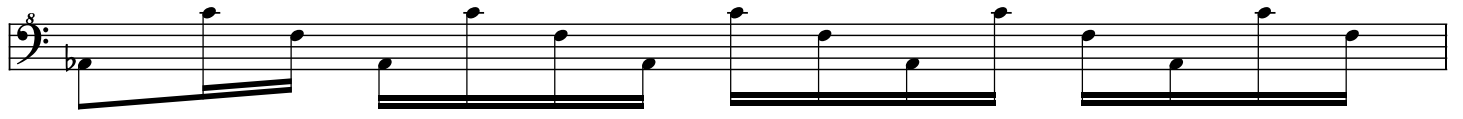
The Intro section consists of four staves of music in 4/4 time. The first staff begins with a flat sign (Bb) above the first measure. The music is written in bass clef and features a series of eighth notes and quarter notes, with some measures containing beamed eighth notes. The melody is simple and repetitive, with a consistent rhythmic pattern.

## Verse 1

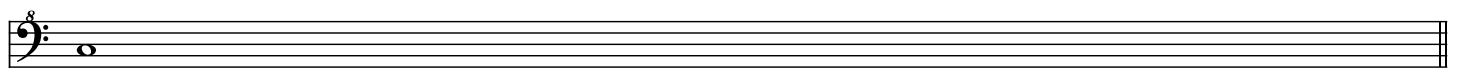
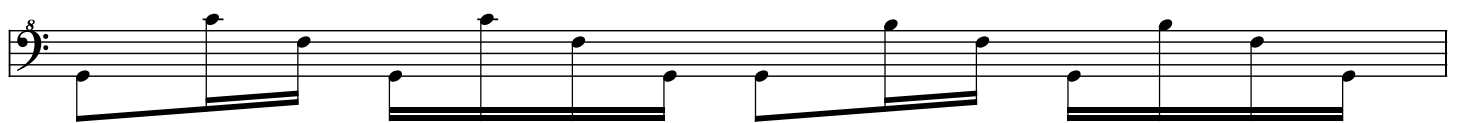
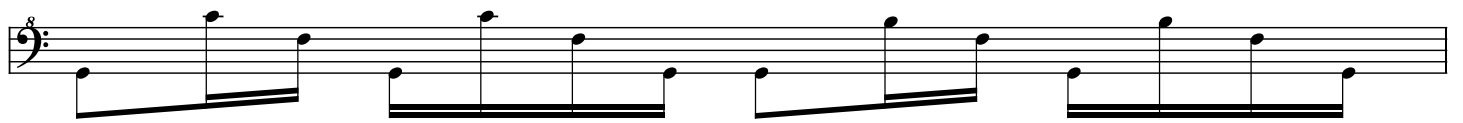
The Verse 1 section consists of eight staves of music in 4/4 time. The first staff begins with a flat sign (Bb) above the first measure. The music is written in bass clef and features a series of eighth notes and quarter notes, with some measures containing beamed eighth notes. The melody is simple and repetitive, with a consistent rhythmic pattern.



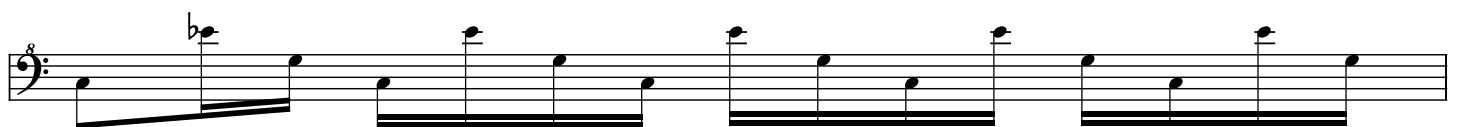
Pre-Chorus



Chorus



Verse 2



First musical staff, bass clef, featuring a flat key signature (B-flat) and a series of eighth notes.

Second musical staff, bass clef, continuing the eighth-note sequence.

Third musical staff, bass clef, featuring a flat key signature (B-flat) and a series of eighth notes.

Fourth musical staff, bass clef, continuing the eighth-note sequence.

Fifth musical staff, bass clef, featuring a flat key signature (B-flat) and a series of eighth notes.

Sixth musical staff, bass clef, continuing the eighth-note sequence.

**Pre-Chorus**

Seventh musical staff, bass clef, featuring a flat key signature (B-flat) and a series of eighth notes.

Eighth musical staff, bass clef, featuring a flat key signature (B-flat) and a series of eighth notes.

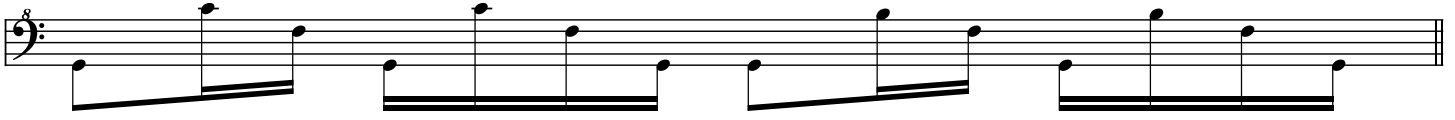
Ninth musical staff, bass clef, featuring a flat key signature (B-flat) and a series of eighth notes.

Tenth musical staff, bass clef, featuring a flat key signature (B-flat) and a series of eighth notes.

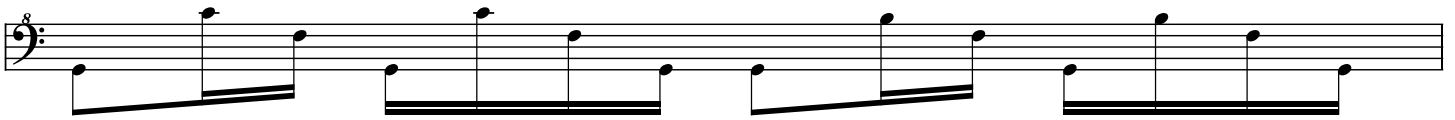
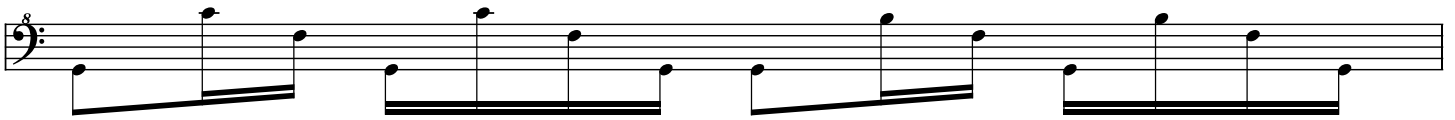
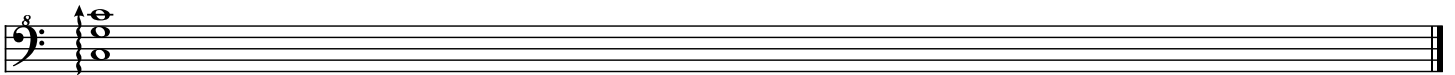
**Chorus**

Eleventh musical staff, bass clef, featuring a flat key signature (B-flat) and a series of eighth notes.

Twelfth musical staff, bass clef, continuing the eighth-note sequence.

A musical staff in bass clef with a flat sign (b) above the first note. The staff contains a sequence of notes: a quarter note G2, a quarter note F2, a quarter note E2, a quarter note D2, a quarter note C2, a quarter note B1, a quarter note A1, and a quarter note G1.A musical staff in bass clef containing a sequence of notes: a quarter note G2, a quarter note F2, a quarter note E2, a quarter note D2, a quarter note C2, a quarter note B1, a quarter note A1, and a quarter note G1.

Chorus

A musical staff in bass clef with a flat sign (b) above the first note. The staff contains a sequence of notes: a quarter note G2, a quarter note F2, a quarter note E2, a quarter note D2, a quarter note C2, a quarter note B1, a quarter note A1, and a quarter note G1.A musical staff in bass clef containing a sequence of notes: a quarter note G2, a quarter note F2, a quarter note E2, a quarter note D2, a quarter note C2, a quarter note B1, a quarter note A1, and a quarter note G1.A musical staff in bass clef with a flat sign (b) above the first note. The staff contains a sequence of notes: a quarter note G2, a quarter note F2, a quarter note E2, a quarter note D2, a quarter note C2, a quarter note B1, a quarter note A1, and a quarter note G1.A musical staff in bass clef containing a sequence of notes: a quarter note G2, a quarter note F2, a quarter note E2, a quarter note D2, a quarter note C2, a quarter note B1, a quarter note A1, and a quarter note G1.A musical staff in bass clef with a double bar line at the end. The staff contains a sequence of notes: a quarter note G2, a quarter note F2, a quarter note E2, a quarter note D2, a quarter note C2, a quarter note B1, a quarter note A1, and a quarter note G1.